

CLOUD



Clear Air



PoE



1 Gbps

Product Overview

IgniteNet™'s MetroLinq™ 60 is the world's first cost-effective 60GHz PTP radio enabling high performance, interference-free connections worldwide. The MetroLinq™ 60 has an added advantage of being license-free in most markets globally, allowing ultra fast deployment and without the hassle of other frequency bands requiring a license. The MetroLinq™ 60 also includes a second 5GHz radio which can be configured as PTP (backup), AP, or Client for applications ranging from hotspots to maintenance to many more!

Key Features and Benefits

Interference-Free & Unlicensed Band

The IgniteNet™ MetroLinq™ 60 offers unprecedented performance - combining both the benefits of unlicensed band operation with no interference!

Dual Band 60GHz & 5GHz Operation

The MetroLinq™ 60 includes a second 5GHz radio which can be configured as a backup to the 60GHz or as a standards-based 802.11ac AP to be used for a variety of applications like maintenance, hotspot, and other uses.

Powerful, Flexible Configuration

The MetroLinq™ 60 can operate either as a stand-alone device or as a coordinated, cloud-managed device, easily meeting the requirements of any installation.

Robust Weather-Resistant Design

The MetroLinq™ 60 features a hybrid metal/plastic design built to withstand the harshest environments including precipitation, hot/cold weather and high/low humidities.

Product Variants

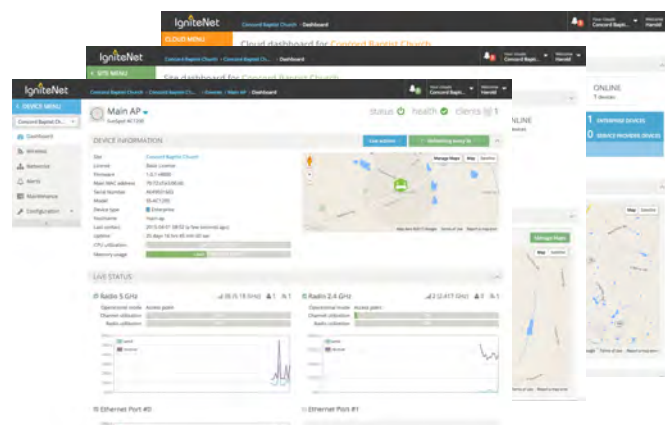


35cm size w/ 60GHz + 5GHz



19cm size w/ 60GHz + 5GHz

Global Cloud Management



Features

HARDWARE FEATURES

- ✓ 2x Gigabit Ethernet Port (PoE IN)
- ✓ 1x Power tap (Power OUT)
- ✓ 1x USB 2.0 Port (optional)
- ✓ Dual flash image support

- ✓ 190 x 190 x 120 mm (small version)

- ✓ 60GHz:
TBD
- ✓ 5GHz:
TBD

RANGE

- ✓ Up to 1.5km (large version, location dependent)
- ✓ up to 900m (small version, location dependent)

APPLICATIONS

- ✓ Fixed Wireless Access (broadband)
- ✓ 3G/4G Backhaul
- ✓ Metro WiFi
- ✓ Campus Interconnection
- ✓ Hybrid Fiber/Wireless Networks

Ordering Information

Part Number	Description
ML-60-35-XX	60GHz Outdoor PTP + 5GHz w/ Integrated 42dBi (60GHz) and 22dBi (5GHz) antenna
ML-60-35-1-XX	60GHz Outdoor PTP + 5GHz w/ Integrated 42dBi (60GHz) and RPSMA Connectors (5GHz)
ML-60-19-XX	60GHz Outdoor PTP + 5GHz w/ Integrated 38dBi (60GHz) and RPSMA Connectors (5GHz)

****XX is used to denote localization (US, EU, AU, CN)**

Contact